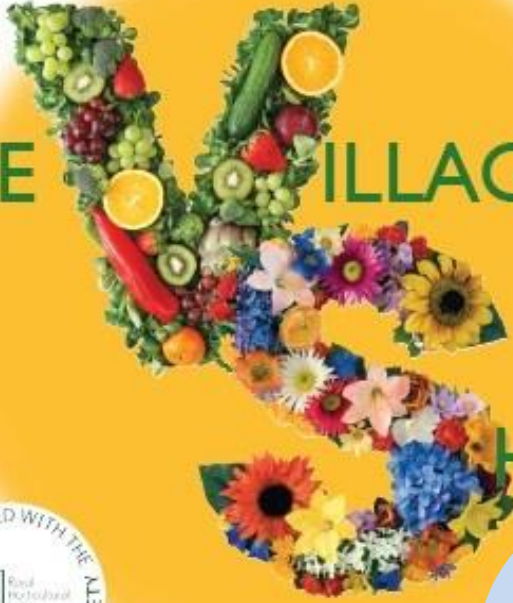


# THE VILLAGE



# HOW



Saturday  
15<sup>th</sup> July 2023  
12:30 to 5:00 pm  
Grundisburgh  
Playing Field

organised by  
Grundisburgh, Burgh  
& Culpho Horticultural Society

## Schedule, programme and entry form

Classes open to people from all areas

President:  
Nicola Hobbs

Supported by:



**HOMESTYLE**  
UK WINDOWS



**HOMESTYLE  
UK WINDOWS**

**Sponsors of the  
Grundisburgh  
Village Show  
2023**

Are you thinking of  
updating your home?

Why not speak to an  
experienced member of  
our team to see what we  
can do for you!

Windows | Doors  
Conservatories

Aluminium Bifold Doors  
French Doors | Patio Doors  
Warm Roofs | Lantern Roofs  
Verandas | Glass Rooms



7 Betts Avenue  
Martlesham Heath  
IP5 3RH



01473 614444



[www.homestyleuk.co.uk](http://www.homestyleuk.co.uk)

# Introduction

## Hurray it's Showtime !

A very warm welcome to the Village Show 2023, everyone's favourite village event.

Inside you will find class lists, entry form and lots of useful hints and tips, so good luck with all your entries. Our cups and trophies will this year be presented by our President Nicola Hobbs who has a long association with the Show and the Village as a whole and we are proud to have Nicola as President for 2023.

A huge thank you to our frontline sponsor Homestyle Windows and our growing list of Patrons, along with our advertisers and class sponsors. Their financial contributions and continued support helps to cover the ever-increasing costs of staging this fantastic community event.

I am also grateful to our wonderful band of volunteers we could not stage the Show without your help.

On a personal note, this will be my last year as Chairman of the Horticultural Society and bring to an end my 7 years with the Show. I thank all committee members past and present for their hard work and support in particular during the pandemic, my special thanks to Sharon for her 6 years as Show Secretary.

I hope you all have an enjoyable day with friends and family and I wish the Village Show continued success in the future

*Martin Cripps, Chairman  
Grundisburgh, Burgh & Culpho Horticultural Society*

*Chairman: Martin Cripps ([chairman@grundisburgh.show](mailto:chairman@grundisburgh.show), 01473 738997)*

*Vice-chairman: Georgie Keates*

*Treasurer: Bryan Laxton*

*Committee members: Sheila Caryer, Christine Doorly, Brenda Garrett, Liz Hodges, Catherine Laxton, Gillian & Alistair Leech, Chris Shemmings, Kathy Turner, Gill & David Twissell.*



# MAKING **LOCAL KNOWLEDGE** COUNT

At Ensors, we have the right people who can provide you with the right answers.

**Ensors Chartered Accountants**  
Making you more than just a number

ENSORS.CO.UK  
CAMBRIDGE / HUNTINGDON / IPSWICH  
SAXMUNDHAM / BURY ST. EDMUNDS



## Woodbridge Landscapes

creating visions

### DESIGN & CONSTRUCTION



The Association of  
**Professional  
Landscapers**

**Professional Landscape & Garden Services**

telephone: 07747 034307

email: [ktfinbow@btinternet.com](mailto:ktfinbow@btinternet.com)







# FINE FLOORS on your doorstep



  **01473 626097**

**[debencarpetsandflooring.co.uk](http://debencarpetsandflooring.co.uk)**

Unit N Bristol Court, Betts Avenue,  
Marlesham Heath Business Park,  
Ipswich, Suffolk IP5 3RY

# *Entry Conditions*

- All classes are open to anyone from within and outside the three villages.
- Fees are 30p per entry.
- Only one entry per person per class.
- Entries must not have been entered in the show before.
- Entries must be made or grown by the exhibitor, other than the materials used in flower arrangements.
- Entry forms are accepted at the Parish Rooms, The Green, Grundisburgh, IP13 6TA on Wednesday 12<sup>th</sup> July between 6:30pm and 9pm.
- Postal entries will be accepted but must arrive before 6<sup>th</sup> July. These should be sent to: Apple Tree Cottage, Boot Street, Great Bealings, IP13 6PB and accompanied by a cheque payable to “Grundisburgh Horticultural Show”. People putting in postal entries will need to collect their entry numbers from the show desk on show day.
- The form on back inside page should be used for entries, one form per exhibitor. Extra copies may be photocopied or downloaded from the website at [www.grundisburgh.show](http://www.grundisburgh.show). They are also available in Williams Stores.

## **SHOW DAY ARRANGEMENTS**

- Exhibits must be delivered to the marquee on Grundisburgh Playing Field, Ipswich Road, IP13 6TN between 8:00am and 10:00am on show day. Exhibitors must leave the marquee by 10:15am.
- Judging will start at 10.20am and only people authorised by the committee may be in the marquee while it is in progress.
- The marquee will re-open at 1.30pm.
- Prize money can be collected from 3pm in the marquee. Money not collected at the show will be available from Georgie Keates. Hillingdon, The Street, Grundisburgh, IP13 6TD.
- The presentation of the cups will take place at 4:30pm.
- Exhibits must not be removed from the marquee before prize giving ends (approximately 5pm) but must be cleared by 5:30pm.
- The organisers will take care to see that exhibits are safe, but cannot accept responsibility for loss or damage.

## **JUDGING**

- If an entry does not conform to the details listed in the schedule, e.g., wrong size or wrong number of items, it will be eliminated.
- The judges' decisions are final. Any objections should be made to the Secretary by 2.30pm on show day.
- Prizes will not be awarded in any class where the judges feel the standard does not merit it.



Create a home  
full of joy  
& memories

SHOP IN STORE & ONLINE

[www.barretts.co.uk](http://www.barretts.co.uk)  
01394 384 300 | [shop@barretts.co.uk](mailto:shop@barretts.co.uk)  
40 Thoroughfare, Woodbridge IP12 1AL  
(Free customer parking at rear of store)



•MOT's •SERVICING •TYRES

**01473 735575**

MOT Classes 4 & 7  
Servicing & Repairs

Diagnostics  
Tyres  
Aircon

EV Qualified

**FLUNDER  
WINES**

Retail. Trade. Events.

Visit us:  
Clopton Commercial Park  
IP13 6QT

[www.flunderwines.com](http://www.flunderwines.com)

Contact us:  
07885458330  
[info@flunderwines.com](mailto:info@flunderwines.com)

## *Classes – open to people from all areas*

### **FLOWER ARRANGING**

1. Petite arrangement. 10cm/4" in all directions. *Kindly sponsored by Martin and Sharon Cripps.*
2. What! No flowers! Arrangement of greenery no flowers. Max 61cm/24". *Kindly sponsored by Elizabeth Stephenson.*
3. Floating flower heads in bowl without leaves. *Kindly sponsored by Paul Finch and Julie George.*
4. Arrangement to commemorate the Coronation of King Charles III. *Kindly sponsored by David and Gill Twissell.*
5. Bottled Blooms. Three flowerheads displayed as individual blooms in three beer bottles. *Kindly sponsored by The Grundisburgh Dog.*
6. An arrangement in a brandy glass. *Kindly sponsored by Catherine and Bryan Laxton.*
7. Long, Tall and Sassy using 6 blooms and some ribbon. *Kindly sponsored by Suzanne Gould.*
8. Risen, an arrangement in a small loaf tin. *Kindly sponsored by David and Georgie Keates.*
9. An arrangement of herbs in jug. *Kindly sponsored by an anonymous supporter.*
10. A decorative arrangement of sweet peas. Max 46cm/18" (for the Muriel K Lingley Perpetual Challenge Cup). *Kindly sponsored by Caroline Saunders Garden Design.*
11. A decorative arrangement of garden flowers. Max 61cm/24" (for the Eileen Goodwin Cup). *Kindly sponsored by Laxton Interiors.*

#### *Notes:*

- Entries must be kept within size specified. There are no height limitations.
- The sizes apply to the whole arrangement, including the container.
- Only in class 10 must the materials be grown by the exhibitor.
- The flowers in class 11 must be from a garden.
- The Perpetual Cup is awarded to the exhibitor with most points in classes 1 to 11.

### **FLOWERS AND PLANTS**

12. Mixed garden flowers, max. five varieties, two stems of each. *In memory of David Warren.*



13. Three stems of the same perennial. *Kindly sponsored by Nicola Hobbs.* (The Katie's Gardens Perennial Challenge Trophy will be awarded for the most points in classes 12 and 13).
14. One potted pelargonium (geranium), any colour. Max 23cm/9" pot. *Kindly sponsored by Alistair and Gill Leech*
15. One pot plant in bloom (not pelargonium). Max 23cm/9" pot. *Kindly sponsored by Chris and Anne Lee.*
16. Six spikes of annual sweet peas. *Kindly Sponsored by Helen and John Ellerby.*
17. A circular hanging basket. Max diameter 36cm/14". *Kindly sponsored by Suzanne Gould.*
18. One rose judged for perfume. *Kindly sponsored by Elizabeth Stephenson.*
19. One specimen rose (for the Major General Gurdon Challenge Cup). *Kindly sponsored by an anonymous supporter.*
20. Three HT roses, any variety (for the Ivor Marjoram Memorial Perpetual Challenge Cup). *Kindly sponsored by Suzanne Gould.*
21. Six pansies (for the Deryck Gray Memorial Perpetual Challenge Cup). *Kindly sponsored by The Grundisburgh Dog.*
22. Tree grown in a pot from seed or nut. *Kindly sponsored by Caroline Saunders Garden Design.*
23. Cacti or succulent. Could be mixed. Max 23cm/9" pot. *Kindly sponsored by David and Gill Twissell.*
24. Three stems of pinks. *Kindly sponsored by Catherine and Bryan Laxton.*
25. Potted indoor plant. Max 23cm 9" pot. *Kindly sponsored by Suzanne Gould.*
26. Three stems of lily. Can be mixed varieties. *Kindly sponsored by Richard and Chris Garnham.*
27. Three stems of dahlia. Can be mixed varieties. *Kindly sponsored by Laxton Interiors.*

*Notes:*

- The maximum width or depth of plants or pots must not exceed 46cm/18".
- Classes are judged on the quality of flowers, not the arrangement.
- Where vases are specified, exhibitors may borrow one of the special vases available on entry night or the morning of the show (first come, first served).
- Points gained by the winners in this section go towards the David Warren Perpetual Challenge Cup for Flowers, Vegetables and Fruit.

**VEGETABLES & HERBS**

28. A pot of any variety of herb grown from seed or cutting. Max 31cm/12" pot. *Kindly sponsored by Nicola Hobbs*

29. A collection of three bunches of herbs in a container, tied and named. *Kindly sponsored by Caroline Saunders Garden Design.*
30. Pot grown edible chili plant. Max 20cm/8" pot. *Kindly sponsored by David and Gill Twissell.*
31. Two little gem lettuces. *Kindly sponsored by Alistair and Gill Leech.*
32. One lettuce, any variety or colour. *Kindly sponsored by Richard and Chris Garnham.*
33. Five tomatoes of one variety. *Kindly sponsored by David and Gill Twissell.*
34. Five tomatoes of any variety, colour or size. Can be mixed. *Kindly sponsored by Laxton Interiors.* (The Richard Garrett Memorial Cup will be awarded for the most points in classes 33 and 34).
35. Five potatoes of one variety *Kindly sponsored by David and Gill Twissell.*
36. Three carrots, long, with tops tied. *Kindly sponsored by Iain and Heather Langdon.*
37. Three carrots other than long, with tops tied. *Kindly sponsored by Adrian and Maggie Shield.*
38. Five pods of peas. *Kindly sponsored by David and Georgie Keates.*
39. Five pods of broad beans. *Kindly sponsored by Forge Stores.*
40. Five runner beans. *In memory of John Farrow.*
41. Five French beans. *Kindly Sponsored by Helen and John Ellerby.*
42. Three onions, tops cut and tied. *Kindly sponsored by Forge Stores.*
43. Five shallots, grown from bulbs, tops cut and tied. *Kindly sponsored Forge Stores.*
44. Three sticks of rhubarb. *Kindly sponsored by Martin and Sharon Cripps.*
45. Three courgettes, max length 15cm/6". *Kindly sponsored by Forge Stores.*
46. One summer cabbage. *Kindly sponsored by David and Gill Twissell.*
47. One cucumber, any variety. *Kindly sponsored by David and Gill Twissell.*
48. Three globe beetroot with leaves and tops tied (for the Steven Muttit Memorial Trophy). *Kindly sponsored by Mark and Lindsey Williams.*
49. A decorative pot of basil for the kitchen windowsill. *Kindly sponsored by Maggi Thompson.*
50. Longest runner bean. *Kindly sponsored by David and Gill Twissell.*
51. Collection of three kinds of vegetables, three of each (not just those above), displayed on tray, max 61x46cm/24"x18" (for the John Farrow Cup). *In memory of John Farrow.*
52. Exotic or unusual vegetable. *Kindly sponsored by Caroline Saunders Garden Design.*
53. A vegetable disaster, the one that went wrong. *In memory of David Warren.*

Notes:

- Points gained by the winners in this section go towards the David Warren Perpetual Challenge Cup for Flowers, Vegetables and Fruit.

## **FRUIT**

54. Six raspberries. Displayed with stalks on. *Kindly sponsored by Laxton Interiors.*
55. Six strawberries. Displayed with calyx on. *Kindly sponsored by Paul Finch and Julie George.*
56. Six strings of red currants. *Kindly sponsored by David and Gill Twissell.*
57. Six strings of blackcurrants. *Kindly sponsored by Adrian and Maggie Shield.*
58. Six gooseberries. *Kindly sponsored by Alistair and Gill Leech.*
59. Six berries of same variety (not those listed above). *Kindly sponsored by Iain and Heather Langdon.*

Notes:

- The Dunnett Cup will be awarded for the most points in classes 54-59.
- Points gained by the winners in this section also go towards the David Warren Perpetual Challenge Cup for Flowers, Vegetables and Fruit.

For entries in flower, fruit and vegetable classes please write the variety (when known) on cards which are available on entry night and at the show.

## **HOME MADE PRESERVES**

60. One jar of strawberry jam. *Kindly sponsored by David and Gill Twissell.*
61. One jar of soft fruit jam other than strawberry. *Kindly sponsored by Adrian and Maggie Shield*
62. One jar of orange marmalade (not jelly). *Kindly sponsored by Elizabeth Stephenson.*
63. One jar of lemon curd. *Kindly sponsored by David and Georgie Keates.*
64. One jar of stone fruit jam. *Kindly sponsored by Alistair and Gill Leech.*
65. One jar of jelly made from hedgerow or garden fruit *Kindly sponsored by The Grundisburgh Dog.*
66. One jar of fruit chutney. *Kindly sponsored by Martin and Sharon Cripps.*

Notes:

- Entries in classes 60 to 65 should be in plain, clear glass jars with no branding and topped with wax paper circle and cellophane cover. Class 66 should have a white lined or plastic lid.

- A label on the side should give type and date made.
- The exhibitor number must go on the jar, not the cover.
- The Perpetual Challenge Cup will be awarded to the exhibitor with the most points total in classes 60-66.

## HOME BAKING

67. Four cheese scones (plain cutter & own recipe). *In memory of David Warren.*
68. Gluten free lemon drizzle cake (to recipe). *Kindly sponsored by Elizabeth Stephenson.*
69. Victoria sandwich, made with a three-egg recipe in approx. 18cms/7" dia. tin. *Kindly sponsored by Mark and Lindsey Williams.*
70. Four gingerbread squares approx. size 6cm/2<sup>1</sup>/<sub>2</sub>" (to recipe) *Kindly sponsored by Mark and Lindsey Williams.*
71. A flask of home-made chilled Summer soup. *Kindly sponsored by Adrian and Maggie Shield.*
72. Four chocolate brownies. *Kindly sponsored by Richard and Chris Garnham.*
73. Rubbed in fruit cake (to recipe) *Kindly sponsored by Mark and Lindsey Williams.*
74. Four shortcrust pastry sausage rolls. *In memory of Jill Farrow.*
75. Savoury quiche. *Kindly sponsored by Martin and Sharon Cripps.*
76. Four wholemeal rolls. *Kindly sponsored by David and Gill Twissell.*
77. (Men only): Sourdough loaf. *Kindly sponsored by Chris and Anne Lee.*
78. (Men only): Banana cake in a 2lb (900gm) loaf tin (for the Andrew Turner Memorial Cup). *Kindly sponsored by David and Gill Twissell.*

## *Notes*

- The recipes are included in the show schedule and on the website.
- Entries should be loosely covered by a clear polythene bag, not clingfilm.
- Entry numbers must be on the plates, not on covers.
- Victoria sandwich – no cream, the jam should be raspberry and dusted with caster sugar. The sponge can be made the day before and filled on the day.
- The Perpetual Challenge Cup is awarded for most points in classes 67-76).

## OTHER PRODUCE

79. Three poultry eggs, white, brown, blue or mixed. *In memory of Jill Farrow.*
80. One jar of honey. *Kindly sponsored by Nicola Hobbs.*
81. One bottle of elderflower cordial. *In memory of David Warren*
82. One bottle sloe gin (min size 250ml). *Kindly sponsored by Catherine and Bryan Laxton.*

83. One bottle of other fruit based alcoholic drink (min size 250ml). *Kindly sponsored by The Grundisburgh Dog.*

*Notes:*

- Eggs should be displayed in a small basket or similar, and a saucer should be provided into which the judge can crack one egg open.
- Entries in classes 81-83 should be presented in plain, clear glass bottles, and should be filled to within half an inch of the cork or screw top. In the case of class 83, the variety of fruit and type of alcohol should be listed on a label on the bottle.

**ART**

84. A pencil drawing of Grundisburgh church. *Kindly sponsored by Julia de Borman.*

85. A bowl of three different fruits, any medium. *Kindly sponsored by an anonymous supporter.*

86. A portrait, any medium. *Kindly sponsored by Julia de Borman.*

87. A seascape, any medium. *Kindly sponsored by Julia de Borman.*

88. A computer-generated design for Christmas wrapping paper. *Kindly sponsored by Iain and Heather Langdon.*

89. A flower in oils. *Kindly sponsored by Julia de Borman.*

*Notes:*

- Entrants are encouraged to title their work
- Artwork is not to exceed 61cm x 61cm/24" x 24" including the frame, if any.
- The Perpetual Challenge Cup is awarded for the entry judged the best art in show.

**PHOTOGRAPHY**

90. People at work – Black & White. *Kindly sponsored by Catherine and Bryan Laxton.*

91. Pets out of control. *Kindly sponsored by David & Georgie Keates.*

92. Mini beasts. *Kindly sponsored by Paul Finch and Julie George.*

93. Woodland fungi. *Kindly sponsored by an anonymous supporter.*

94. Village pride. *Kindly sponsored by Chris and Anne Lee.*

95. Sunset. *Kindly sponsored by Chris and Anne Lee.*



*Notes:*

- Photos must be unframed and mounted on card which must be larger than the photo and must not exceed 12" x 10" / 30cm x 25cm overall.
- The Steve Roberts Trophy is awarded for the photograph judged to be best in show.

### **HANDICRAFT**

96. A knitted item. *In memory of Peter Moore.*
97. A Lego vehicle. *Kindly sponsored by Iain and Heather Langdon*
98. An item of cross-stitch. Max size 60cmx60cm/24"x24". *Kindly sponsored by Richard and Chris Garnham.*
99. A decorated candle. *Kindly sponsored by Paul Finch and Julie George.*
100. A quilted wall hanging. Max. size 60cm x 60 cm/24"x 24" *Kindly sponsored Elysium Beauty.*
101. An insect hotel in a plant pot. *Kindly sponsored by Nicola Hobbs.*
102. A crocheted soft toy. *Kindly sponsored by David and Gill Twissell.*
103. A poem about the Coronation *Kindly sponsored by Elysium Beauty.*
104. A handmade note book. *Kindly sponsored by David and Gill Twissell.*
105. A handmade wedding congratulations card (not from a kit). Display with envelope. *Kindly sponsored by Elysium Beauty.*
106. A Christmas tree decoration. Any medium. *Kindly sponsored by Elysium Beauty.*

*Notes:*

- The Joyce Page Perpetual Challenge Cup is awarded for most points in classes 96-106.

### **OVER SIXTY FIVES**

107. A jar of soft fruit jam. *Kindly sponsored by Neil Stevens.*
108. Coffee and walnut sponge. *Kindly sponsored by David and Gill Twissell.*
109. Flower arrangement using five flowers and foliage. *Kindly sponsored by Neil Stevens.*
110. A knitted hat. *Kindly sponsored by Neil Stevens.*
111. An invitation to a 'special' birthday party. *Kindly sponsored by Maggi Thompson.*

*Notes:*

- These classes are open to people aged 65 or over on show day.
- The Barber-Starkey Challenge Cup will be awarded for most points in classes 107-111.

## **BEGINNERS**

112. Handicraft: I do this for a hobby - amaze us! *Kindly sponsored by Maggi Thompson.*
113. Three stems of the same variety of flowers from my garden. *Kindly sponsored by Neil Stevens.*
114. Something I enjoy eating from my garden. *Kindly sponsored by David and Gill Twissell.*
115. Four flapjacks. *Kindly sponsored by Neil Stevens.*

### *Notes:*

- Beginners' classes are open to people who have never entered any adult classes in the Village Show before.
- The Gary Cole Memorial Challenge Cup will be awarded for most points in classes 112-115.

## **YOUTH 12-16**

116. A piece of artwork made from recycled material. *Kindly sponsored by Summer Isle Films*
117. A photograph of your pet. *Kindly sponsored by Summer Isle Films.*
118. A handy tied posy of flowers from your garden. *Kindly sponsored by Summer Isle Films.*
119. Four chocolate brownies, made by you. *Kindly sponsored by Summer Isle Films.*
120. You've made it, let's see it, i.e., any piece of art or craft (max A3 base). *Kindly sponsored by Summer Isle Films.*

## **CHILDREN (8 - 11)**

121. A tissue paper pom pom flowers (see guidance) presented in a vase, jug or other container (no bigger than A3). *Kindly sponsored by Helen and John Ellerby.*
122. A patchwork tree drawing (see guidance, no bigger than A3). *Kindly sponsored by Grundisburgh Tennis Club.*
123. A garden in an egg box (see guidance). *Kindly sponsored by Grundisburgh Tennis Club.*
124. Four hedgehog bread rolls to recipe (see guidance) on a paper plate. *Kindly sponsored by FOGS.*
125. You've made it, let's see it. i.e., any piece of art or craft (maximum A3 base). *In memory of Peter Moore.*

### CHILDREN (5 - 7)

126. Collage 'Over the rainbow' (see guidance) no bigger than A3. *Kindly sponsored by Grundisburgh Tennis Club.*
127. An item made of buttons or beads. *Kindly sponsored by John and Helen Ellerby.*
128. Four Unicorn biscuits (see guidance) on a paper plate. *Kindly sponsored by FOGS.*
129. A crayon, coloured pencil or felt tip pen drawing: 'Dinosaur' (no bigger than A3). *Kindly sponsored by Grundisburgh Tennis Club.*
130. You've made it, let's see it, i.e., any piece of art or craft (maximum A3 base). *Kindly sponsored by Maggi Thompson.*

### CHILDREN (4 and Under)

131. A playdough model of 'my favourite dinner' (on a paper plate). *Kindly sponsored by FOGS.*
132. A decorated yoghurt pot cress head (see guidance). *In memory of Peter Moore.*
133. A crayon, coloured pencil or felt tip pen drawing. 'Butterfly' (no bigger than A3). For the Katherine Freeth Cup. *In memory of Peter Moore.*
134. Four oat energy cookies (see guidance) *Kindly sponsored by FOGS.*
135. Collage 'Down on the farm'. (See guidance). *Kindly sponsored by David and Georgie Keates.*

*Notes: The guidance notes for the youth and children's classes are also on the website: [www.grundisburgh.show](http://www.grundisburgh.show) Hard copies are available from Williams Stores, The Green, Grundisburgh.*

Our sponsors are invited to display their promotional material in the marquee on show day. Any businesses interested in getting their name across at the show next year should contact: [chairman@grundisburgh.show](mailto:chairman@grundisburgh.show). If there are other classes you would like to be included next year, please tell a committee member or fill in a suggestion form, which are available on Entry Night and at the Show. We welcome your views. Enquiries to the Show Secretary, 01473 738997, [secretary@grundisburgh.show](mailto:secretary@grundisburgh.show)

## CHILDREN'S CLASSES 2023- SUPPLEMENTARY GUIDANCE

*General – Parents do supervise, but please let the children do their own entries.*

### **Class 121**

[Tissue Paper Pom-pom Flowers | Kids' Crafts | Fun Craft Ideas | FirstPalette.com](https://www.firstpalette.com/craft/tissue-paper-pompom-flowers.html)

<https://www.firstpalette.com/craft/tissue-paper-pompom-flowers.html>

### **Class 122**

Divide your piece of paper into 12 squares. Draw the outline of one tree filling the paper and then in each individual square colour the tree using different colours and styles. See Pinterest and Google for ideas.

[Patchwork Tree by mydarkenedeyes on tumblr.com Recently, I have been making an attempt to use some o... | Art lessons for kids, Art lessons middle school, Art lessons \(pinterest.co.uk\)](https://www.pinterest.co.uk/pin/351280839698629869/)

<https://www.pinterest.co.uk/pin/351280839698629869/>

### **Class 123**

[How to make a mini egg box garden - Countryfile.com](https://www.countryfile.com/how-to/crafts/how-to-make-a-mini-egg-box-garden/)

<https://www.countryfile.com/how-to/crafts/how-to-make-a-mini-egg-box-garden/>

### **Class 124**

[Hedgehog rolls recipe | BBC Good Food](https://www.bbcgoodfood.com/recipes/hedgehog-rolls)

<https://www.bbcgoodfood.com/recipes/hedgehog-rolls>

### **Class 128**

[Unicorn biscuits recipe | BBC Good Food](https://www.bbcgoodfood.com/recipes/unicorn-party-cookies)

<https://www.bbcgoodfood.com/recipes/unicorn-party-cookies>

## Class 132

[How to grow your own cress head | Features | Jamie Oliver](#)

<https://www.jamieoliver.com/features/how-to-grow-your-own-cress-head/>

## Class 134

[Oaty energy cookies recipe | BBC Good Food](#)

<https://www.bbcgoodfood.com/recipes/oaty-energy-cookies>

## Class 135

### Collage 'Down on the farm'

A collage is a picture assembled using a range of different materials such as: tissue paper, feathers, goggly eyes, ribbon etc.



*New boilers,  
maintenance &  
servicing*

*Hot water  
cylinders*

*All central  
heating work*

*All general  
plumbing &  
maintenance*

S L E E P S A F E

# PUMMING & HEATING SPECIALISTS

Email: [info@sleepsafe-ltd.co.uk](mailto:info@sleepsafe-ltd.co.uk)  
Tel: 01473 277 073  
[www.sleepsafe-ltd.co.uk](http://www.sleepsafe-ltd.co.uk)





## Bed & Breakfast

Self-contained accommodation  
In large converted barn in  
tranquil surroundings.

Big sitting room with TV and games,  
fridge, kettle and toaster plus two twin  
bedrooms, all at ground floor level.


Continental breakfast.  
Tennis court. Child friendly.

ROBERT & ANNE HUTCHISON  
HAWTHORN COTTAGE  
LOWER ROAD  
GRUNDISBURGH IP13 6UQ  
01473 738199  
anne.hutchison@btopenworld.com



## **GARDENS OPEN**

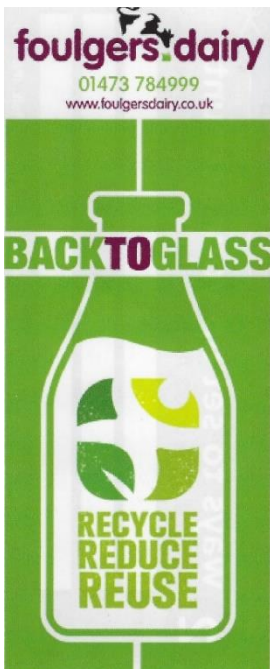
**GRUNDISBURGH, BURGH & CULPHO**  
**Saturday 10<sup>th</sup> & Sunday 11<sup>th</sup> June, 2pm to 6pm**

Admission £5 per person, accompanied children free  
Tickets from Grundisburgh Green IP13 6TA  
Additional tickets & parking Finndale House IP13 6PU  
Bee Line – how many  can you find?

Teas, cake stall and Katie's Garden plants on The Green

Supported by The Grundisburgh Dog and Katie's Garden

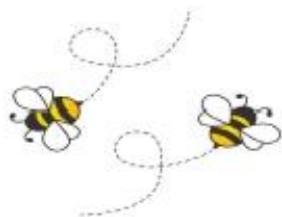
Organised by Grundisburgh, Burgh & Culpho Horticultural Society  
Proceeds to go towards Grundisburgh Show and village charities  
[www.grundisburgh.show](http://www.grundisburgh.show)



## The essentials, delivered direct to your door!



Foulgers Dairy have been serving the people of Suffolk & Norfolk for over 80 years. More people are now going 'back to glass', and receiving their milk and essential groceries direct to their doors!



## **JOIN THE GREAT GRUNDISBURGH BEE LINE**

As part of Hidden Gardens 2023 - 10<sup>th</sup> /11<sup>th</sup> JUNE

Join in the fun and create a bee model, installation or sculpture for your front garden for visitors to find and enjoy.

Any style, the more creative, the better!





**FREE TO ENTER**



**PRIZES TO BE WON!**



A few facts about bees:

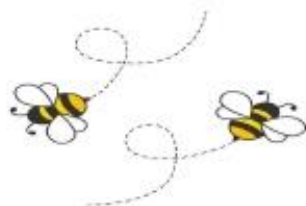
-  Honey bees, scientifically also known as *Apis Mellifera*, are environmentally friendly and are vital as pollinators
-  The honey bee is the only insect that produces food eaten by man
-  Honey bees fly at up to 15 miles per hour
-  A honey bee visits 50 to 100 flowers during a collection trip

**Enter by 22 May** to be included on the map, for visitors to find your artwork!

**You can enter by emailing:**

[beeline@btinternet.com](mailto:beeline@btinternet.com)

Or pick up an entry form at Williams Stores on The Green



THE PLACE TO FIND A MOLE CATCHER

**AOPMC**

AFFILIATION OF PROFESSIONAL MOLE CATCHERS  
www.aopmc.co.uk Email: info@aopmc.co.uk



**THINK  
WILDLIFE**

Campaign for Responsible Rodenticide Use

## DISCOUNT PEST CONTROL

**WE ARE A NON TOXIC COMPANY WITH OVER  
35 YEAR IN THE PEST CONTROL INDUSTRY.**

**£5 Million Public Liability Cover**

**EXPERTS IN TRAPS AND TRAPPING.**

**BASED IN GRUNDISBURGH WE OFFER  
DISCOUNTS TO LOCAL VILLAGES**



**MOLES**

**RABBIT'S**



**SQUIRREL'S**

**01473 735168**



**WASP  
PROBLEM ?**

**07765643484**

**Website: [www.discountpestcontrol.org](http://www.discountpestcontrol.org)**

**Email: [tracysacc@aol.com](mailto:tracysacc@aol.com)**



# Notcutts Garden Centre

in the heart of Woodbridge

- Beautiful show garden and nature walk
- Family friendly restaurant
- Plants, gardening, furniture, homeware and gifts
- Expert help and advice
- Lifetime hardy plant guarantee



Monday to Saturday 9am - 5pm, Sunday 10.30am - 4.30pm  
Restaurant open Monday to Saturday 9am - 4pm and Sunday 10am - 3.30pm

## Notcutts Woodbridge

Ipswich Road, Woodbridge Suffolk IP12 4AF  
01394 445400

Discover more online at: [notcutts.co.uk](http://notcutts.co.uk)



## DOYLE ELECTRICAL SERVICES



### Electrical Contractors, Solar PV and Renewable Energy Specialists.

We have been providing high quality electrical services to commercial and domestic clients across Suffolk and beyond for over 20 years.

**Telephone: 01473 622674**

Fax: 01473 620941 Email: [sales@doyleelectrical.co.uk](mailto:sales@doyleelectrical.co.uk)

Website: [www.doyleelectrical.co.uk](http://www.doyleelectrical.co.uk)

Unit Q Bristol Court, Martlesham Business Park, Martlesham, Suffolk IP5 3RY



# CAR BOOT SALE

Saturday 15<sup>th</sup> July 2023

Grundisburgh Playing Field

12:30 p.m. to 5:00 p.m. - Setting up from 11:00 a.m.

No pre-booking, £6.00 per car payable on the day,  
plus £5.00 for an additional pitch.

Enquiries to: 01473 738977.

No dogs, apart from guide dogs, are allowed on the playing field.



Installation and maintenance of air conditioning,  
refrigeration and energy efficient heat pumps  
throughout East Anglia.

---

**Proud to Support  
The Grundisburgh Village  
Show 2023**

---

Park Farm Grundisburgh  
Suffolk IP13 6TR  
Tel 01473 738800

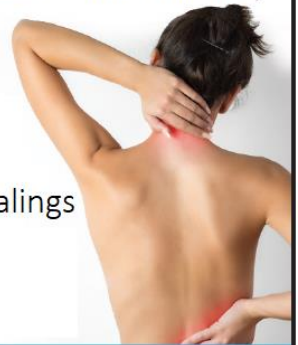
Website: [www.sapphireservices.co.uk](http://www.sapphireservices.co.uk)  
E-Mail: [sales@sapphireservices.co.uk](mailto:sales@sapphireservices.co.uk)

## SCF SPORTS MASSAGE

- Alleviate pain
- Increase joint mobility
- Kinesiology taping
- Lower stress and anxiety

Phone  
**075460  
58446**

Clinic in  
Great Bealings



[www.sportsmassaged.co.uk](http://www.sportsmassaged.co.uk)  
f @SCFsportmassage

*Book the date – the Village Show in 2024  
will be on Saturday 13<sup>th</sup> July*





# KILN FARM NURSERY AND FARM SHOP



**We are a family business based on a farm  
On the nursery we grow and sell:**

**Shrubs • Perennials • Climbers • Trees • Summer bedding  
Herbs • Hanging baskets • Winter pansies • Wallflowers • Vegetable plants**



**Kiln Farm, Main Road  
Kesgrave, Ipswich IP5 1BJ**

**Open Monday – Saturday 9:00am – 5:00 pm**

**WWW.KILNFARM.COM**

# Prizes

## ADULT CLASSES

The first prize in each class is £5. There are no second or third cash prizes but prize cards are awarded for these.

## CHILDREN'S CLASSES

First prize £2, second £1 and third 50p.

All the prizes have been sponsored by generous individuals and businesses. These are all listed on page 37.

## CUPS AND TROPHIES

### 2022 WINNERS

**Eileen Goodwin Trophy** (for decorative arrangement of garden flowers):  
*Pat Fletcher.*

**Muriel K Lingley Perpetual Challenge Cup** (for decorative arrangement of sweet peas): *Julie Cockburn.*

**Katie's Garden Perennial Challenge** trophy (for most points in classes 12 & 13): *Roland Copping & Helen Radwell.*

**Flower Arranging Perpetual Challenge Cup** (for most points in flower arranging classes): *Helen Taylor & Pat Fletcher.*

**Major General Gurdon Perpetual Challenge Cup** (for one specimen rose):  
*Jennifer Hammond.*

**Ivor Marjoram Perpetual Challenge Cup** (for three HT roses): *Jennifer Hammond.*

**Deryck Gray Memorial Perpetual Challenge Cup** (for six pansies): *Roland Copping.*

**Richard Garrett Memorial Cup** (for most points in classes 33 & 34): *Roland Copping.*

**Stephen Muttit Memorial Trophy** (for three globe beetroot): *Roland Copping.*

**John Farrow Cup** (collection of vegetables): *Roland Copping.*

**Dunnett Cup** (for most points in fruit classes): *Roland Copping.*

**David Warren Perpetual Challenge Cup** (for most points in flower, vegetable and fruit classes): *Roland Copping.*

**Preserves Perpetual Challenge Cup** (for most points in preserves classes):  
*Carol Barker.*

**Andrew Turner Memorial Cup** (for men-only baking class): *Chris Lee.*

**Baking Perpetual Challenge Cup** (for most points in baking classes):  
*Abigail Radwell.*

**Art Perpetual Challenge Cup** (for best art in show): *Ann Farrell.*

**Steve Roberts Trophy** (for best photograph in Classes 92-95) *Anne Lee.*

**Joyce Page Perpetual Challenge Cup** (for most points in handicraft classes): *Sharon Proctor.*

**Barber Starkey Perpetual Challenge Cup** (for most points in over 65s classes:)  
*Jan Whittaker.*

**Gary Cole Memorial Challenge Cup** (most points in beginners' classes:)  
*Joyce Walls.*

**Iain Langdon Trophy** (for most entries): *Roland Copping.*

**Village Show Top Cup** (personal choice of the cup presenter): *Pauline Coomber.*

Most points in Youth and Children's classes:

**Twelve to fifteen:** *Harry Cook.*

**Eight to eleven:** *Eleanor Mills.*

**Five to seven:**

**Four and under:** *Ada Langdon.*

**Katherine Freeth Cup** for best picture by a four-year-old: *Ada Langdon.*



## *Show Day Programme*

*Please note, information subject to change.*

08:00am	Marquee opens for staging entries.
10.15am	Marquee closes except for judges and stewards.
11:00am	Field open for car boot set up.
12.30pm	Stalls and car boot open. Serving of refreshments starts.
12.45pm	Patrons' preview and reception in the marquee.
1.30pm	Marquee opens to everyone. 50p entry fee for adults, children free Entertainment programme starts.
4.30pm	Cups presentation.
5:00pm	Removal of exhibits from marquee and collection of prize money.
5.30pm	All exhibits to be cleared from marquee.
7:45pm	Dance in Marquee, see back page for details.

## The Future of the Village Show

The Horticultural Society is much more than just the Village Show, with our other events and days out we really are quite a jolly bunch.

We also make a major contribution to the village and your community.

Hidden Gardens brings a large number of visitors using the shops, pub as well as buying cakes and plants helping local groups and businesses .

Over the last 10 years almost £20,000 has been donated by the Society to village projects, groups and good causes this is despite losing 2 Shows to covid, something we are extremely proud of.

With our Chairman stepping down this year and there already being a vacancy for a show secretary we must recruit new committee members. If you feel you can help or would like more information please contact;

[chairman@grundisburgh.show](mailto:chairman@grundisburgh.show) or [bryan.laxton@hotmail.com](mailto:bryan.laxton@hotmail.com)

## *Show Day Information*

- The Horticultural Society will endeavour to provide a range of events on the day although some events may be subject to last minute change. More information on: [www.grundisburgh.show](http://www.grundisburgh.show)
- Entry to the playing field and parking are free.
- Entry to the show marquee (from 1.30 pm) costs 50p per adult, children free.
- Please note Fire Exits in marquee.
- First Aid facilities will be available in the red tent beside the main marquee.
- Local groups and charities wanting to run activities and stalls or to be included in the entertainment programme who have not yet booked should contact: [chairman@grundisburgh.show](mailto:chairman@grundisburgh.show) (01473 738997). There is no charge for these organisations but they do need to book.
- Non-local groups and people selling their own crafts should also contact the show secretary, who will advise on fees charged.
- The races are entered on the day.
- Car boot stalls cannot be pre-booked - just turn up on the day and pay £6 per vehicle (and £5 for additional space). Setting up from 11am.
- SHAPA (the Suffolk Horticultural & Produce Association) who provide many of our judges, organise a good value insurance policy and are available for advice. The list of all shows run by its members is hosted on our website:

[www.grundisburgh.show](http://www.grundisburgh.show)

***Sorry no dogs, apart from guide dogs, are allowed on the playing field. (Fields in Trust - formerly National Playing Fields Association - rules)***

**B  
U R R  
O W S &  
SUNAWAY  
OPTICIANS**

Dedicated to providing you with the ultimate in eyecare, style and customer service for nearly twenty years.

**16 The Thoroughfare,  
Woodbridge, Suffolk IP12 1AQ  
01394 383211  
[www.burrowsandsunaway.co.uk](http://www.burrowsandsunaway.co.uk)**

# Recipes

Notes:

1. *Cooking times may need reducing for fan ovens.*
2. *Spoon measures should be level in all recipes unless specified otherwise.*
3. *Recipes should be followed in either ounces or grams, don't mix units*
4. *Ovens should be pre-heated.*

## Gluten Free lemon drizzle loaf (class 68)

250g/8oz butter, softened plus extra for greasing                      250g/8oz caster sugar  
250g/8oz Gluten Free flour    2 teaspoons baking powder  
4 eggs, beaten    grated rind and juice of one lemon  
Lemon rind twist to decorate (optional)

For the Lemon drizzle:

Grated rind and juice of two lemons    100g/3oz granulated sugar

1. Grate lemons and line a 900g (2lb) loaf tin.
2. Place all the cake ingredients in a food processor and whizz until smooth or beat together in a large bowl until light and fluffy.
3. Spoon the mixture into the prepared tin and place in a preheated oven 180°C/350°F/gas mark 4 for 35 to 40 minutes until golden and firm to the touch.
4. Remove from the oven and transfer to a wire rack.
5. Prick holes all over the sponge with a cocktail stick.
6. Mix the drizzle ingredients together in a bowl, then drizzle over the warm loaf.
7. Leave until completely cold.
8. Decorate with a twist of lemon (optional).

## Gingerbread Squares (Class 70)

225g/8oz plain flour    Pinch salt  
2 teaspoons ground ginger    1 teaspoon mixed spice  
1 teaspoon bicarbonate of soda    55g/2oz soft brown sugar  
110g/4oz margarine    170g /6oz black treacle  
55g/2oz golden syrup    140ml<sup>1</sup>/<sub>4</sub>pt milk  
2 eggs, beaten    55g/2oz sultanas

1. Sieve together flour, salt, ginger, spice and bicarbonate of soda, stir in sugar.
2. Melt margarine, treacle and syrup gently, gradually beat in milk, allow to cool and add eggs.
3. Stir in treacle mixture into flour mixture, add sultanas.
4. Pour into greased cake tin, approx. 7" square, and bake 150°C/300°F/gas mark 2 for about 1 hour 15 minutes.
5. Exhibit in squares.

### **Rubbed in Light Fruit Cake (Class 73)**

1 large carrot	225g/8oz self-raising flour
1/2 teaspoon mixed spice	150g/5oz butter
175g/7oz mixed dried fruit	2 beaten eggs
100g/4oz soft light brown sugar	3 tablespoons whole milk
1 tablespoon Demerara sugar	

1. Preheat oven to 180°C / 350°F / gas mark 4.
2. Grease a deep 7" round tin and line the base with non-stick baking paper.
3. Peel and grate carrot finely.
4. Sift flour and spice into a mixing bowl, add the butter cut into small cubes and rub into the flour with fingertips until the mixture resembles fine breadcrumbs.
5. Stir in sugar, dried fruit and grated carrot.
6. Make a hollow in the centre and add the beaten egg and milk. Beat with a wooden spoon until it forms soft dropping consistency.
7. Spoon into the tin and smooth level. Make a dip in the centre and bake for approx. 45 minutes or until a skewer inserted into the centre comes out cleanly.
8. Leave in the tin for 5 minutes, then turn out and cool on a wire rack.
9. Sprinkle the top with the demerara sugar while still hot.



# RIVERVIEW GARDENING

Garden & Grounds Maintenance

Providing all aspects of garden and grounds maintenance to both domestic and commercial customers

- Ride-on lawnmower available
- Green waste removed

**Call: Oliver on 07779 152936 or 01728 561990**

**Email: Riverviewgardening@gmail.com**

EXPERIENCED | QUALIFIED | INSURED

## The Dog Orchard

Our larger secure dog field set amongst our beautiful 60 year old apple orchard. Perfect for off lead exercise surrounded by nature.



NEW

## The Cove

Our smaller secure dog field with a beach and pond area. Perfect for water loving dogs and relaxing days at the beach in the sun.



[www.thedogorchard.co.uk](http://www.thedogorchard.co.uk)

## *Tips for Exhibitors*

Here's some advice to guide exhibitors as to what judges will be looking for and how to display exhibits to their best advantage. However, please also note that some classes have specific directions listed. Judges will eliminate entries which do not exactly meet the specifications in the schedule, however good they are. Double-check all your entries against the schedule before you leave the marquee.

### **FLOWER ARRANGING**

Where maximum sizes are specified, you are expected to use most of the space, not just one corner. Where accessories are allowed, these should not dominate the exhibit, merely enhance the natural materials. Give flowers a long drink before arranging, preferably overnight.

### **FLOWERS**

Pad the container with newspaper to take up space and help keep flowers upright.

### **VEGETABLES**

A uniform shape and size are all important with all vegetables, as is presentation.

Vegetables should be displayed as attractively as possible on plates or boards or directly on the table. Water thoroughly before harvesting for the show. Root vegetables should be washed carefully with a soft cloth and plenty of water.

Beetroot - feed with salt water once a week for three weeks before the show to improve colour (one tablespoon to a gallon). Select roots about the size of a tennis ball and avoid specimens with poor skin colour at the base of the root or which don't have a single small tap root. Small side roots should be removed.

Broad beans - select pods of an even green colour, discarding old ones. Display lengthwise across a plate, with all stalks at one end.

Carrots - avoid pale coloured specimens or those that have turned green at the top.

Courgettes - select young, tender, shapely and uniform fruits not less than 4" and not longer than 6", preferably with flower still attached. Display flat.

Lettuce - lift with the roots intact in the evening or early morning. Wash roots and wrap in moist tissue and plastic bag. Wash upside down, remove only

markedly damaged outside leaves, and lay on the show bench with firm hearts facing the front.

Onions - avoid soft, stained specimens with thick, immature necks. Avoid over-skinning. Tops should be cut and then tied or whipped using raffia or similar material and the roots neatly trimmed back to the basal plate. Can be displayed on rings or on soft collars.

Peas - select long pods which are nice and full, but not old. When cutting from vine, try to keep the waxy bloom intact without finger-marks and leave approx. 1" of stalk. Hold up to strong light by stalk to check for internal damage. Display on a plate.

Potatoes - choose ones which are medium sized for the variety, with shallow eyes and no blemishes. Display on a plate and cover with cloth to exclude light until judging starts.

Rhubarb - stalks should be fresh, straight and long. Foliage should be cut off leaving approx. 3". Wipe clean and trim off any bud scales at the bottom.

Runner beans - the beans should be uniform and as straight as possible. They should include the stalk, so cut them from the vine with scissors or secateurs.

Wrapping them in wet newspaper the night before the show helps to straighten them.

Shallots – bulbs should be thoroughly dried, be free from staining and loose skin. Prepare as onions. Display on sand or similar material to keep upright on a tray.

Vegetable collections – presentation is important but so is the choice of vegetable as some carry more points than others:

20 points – leeks, potatoes, pointed / long carrots, cauliflowers, large onions, peas and tomatoes.

18 points – long beetroot, aubergines, runner beans, stump rooted / ball carrots, house or frame cucumbers and exhibition shallots.

15 points – globe artichokes, dwarf/French/broad beans, round beetroot, cabbage, capsicums, ridge/outdoor cucumbers, lettuces, marrows/squashes and sweet corn.

12 points – mange-tout peas, pickling onions, rhubarb, spinach, cherry tomatoes and garlic.

10 points – courgettes, chives, leaf lettuce, salad onions, cress and radishes.

5 points – herbs.

## **FRUIT**

Pick as close to the show as possible and pick more than called for in the schedule, so that reserves are available when setting out. Select fruit which is

fresh, free from blemish, uniform in size, shape and colour. Cut from the plant and handle by the stalks and as little as possible.

Currants - must be ripe, but not over ripe and be left on the bunch. Choose the ones with the longest strings and largest fruit.

Gooseberries - leave the stalk on.

Raspberries should be clipped from the vine to leave the stalk on. If wet weather, cut pieces of fruit bearing canes and bring under cover and place ends in water until dry enough to cut. Berries look best staged in a line with stalks all one way.

## HOME BAKING

Where a recipe is provided, it must be followed closely.

Cakes - with an even texture and level top will probably be looked on favourably. Display on paper doilies for best effect. Judges may feel an excessive coating of sugar is hiding something.

Victoria sandwich – no cream, the jam should be raspberry and dusted with castor sugar. The sponge can be made the day before and filled on the day.

## HANDICRAFT

Embroidery - judges like to be able to see the back of the work.

Photographs - look best mounted on paper or card slightly larger than the print itself.



## *Thank you to our Patrons*

Our Patrons make an annual donation to The Horticultural Society for which we are extremely grateful. The Society also appreciates those Patrons who wish to remain anonymous. These together with the support of our Sponsors and other fund-raising events help to cover the ever-increasing cost of staging The Village Show.

Mr. J. Ager  
Mr. R. Cooper  
Mr. & Mrs. E. Creasy  
Mr. & Mrs. C. Dow  
Mr. & Mrs. R. Dunnett  
Mr. & Mrs. J. Ellerby  
Mr. P. Finch  
Mr. & Mrs. R. Garnham  
Mrs. B. Garrett  
Ms. J. George  
Mrs. G. Gurdon  
Mr. & Mrs. M. Harris  
Sir Robert & Lady Anne Hutchison  
Mr. & Mrs. D. Keates  
Mr. & Mrs. I. Langdon  
Mr. & Mrs. B. Laxton  
Mr. & Mrs. I. Liddell  
Mr. & Mrs. W. Mayne  
Mr. T. Newman  
Mr. & Mrs. R. Piercy  
Mr. & Mrs, C. Shemmings  
Mr. N. Stevens  
Dr. & Mrs. D. Twissell  
Mr. & Mrs. A. Vowles

Should you wish to become a Patron and help support this wonderful event please contact: [bryan.laxton@hotmail.com](mailto:bryan.laxton@hotmail.com)

## *Thank you to our Class Sponsors and Advertisers*

Our class sponsors range from some local residents and organisations and a few local businesses. We thank them for their generosity which fully covers all the prize money for each class.

Elysium Beauty, Snowdrop Cottage, Burgh, IP13 6PU, 07867 511409, [www.elysium-beauty.co.uk](http://www.elysium-beauty.co.uk)

The Forge Stores, The Green, Grundisburgh, IP13 6TA, 01473 735414,

The Grundisburgh Dog, The Green, Grundisburgh, IP13 6TA, 01473 735267, [www.grundisburghdog.co.uk](http://www.grundisburghdog.co.uk)

Laxton Interiors, The Stables, Finndale House, Woodbridge Road, Grundisburgh, IP13 6UD, 07876 350140 [www.laxton-interiors.co.uk](http://www.laxton-interiors.co.uk)

Caroline Saunders Garden Design, 07789 713576, [www.carolinesaunders.co.uk](http://www.carolinesaunders.co.uk)

Summer Isle Films, Woodend, Grundisburgh Road, Great Bealings, Ipswich, IP13 6PE, 01473 738582. [www.summerislefilms.co.uk](http://www.summerislefilms.co.uk)

Local residents and organisations, Julia de Borman, Martin & Sharon Cripps, Helen & John Ellerby, the Farrow family, Paul Finch, FOGS, Richard & Chris Garnham, Julie George, Suzanne Gould, Grundisburgh Tennis Club, Nicola Hobbs, Sue Hutton, David & Georgie Keates, Iain & Heather Langdon, Catherine & Bryan Laxton, Chris & Anne Lee, Alistair & Gill Leech, Adrian & Maggie Shield, Elizabeth Stephenson, Neil Stevens, Maggi Thompson, David & Gill Twissell, the Warren family and Mark & Lindsey Williams.

A big thank you to all the Advertisers who can be found in this Schedule. Their support of the Grundisburgh Village Show is much appreciated.



# RYDER-DAVIES & PARTNERS Veterinary Practice

Caring for your pets for over 45 years



Experienced team of caring vets, nurses and support staff



Pay monthly healthcare plans available for cats, dogs, rabbits & horses



24 hour care provided by our own vets and nurses

Proud to be an independent practice since 1973

### Woodbridge

18 Grundisburgh Road  
Woodbridge  
IP12 4HG  
01394 380083



### Ipswich

412 Woodbridge Road  
Ipswich  
IP4 4EJ  
01473 274040



### Felixstowe

83 Queens Road  
Felixstowe  
IP11 7PE  
01394 284554



### Rendlesham

Walnut Tree Avenue  
Rendlesham  
IP12 2GG  
01394 420964

To find out more visit our website: [www.ryder-daviesvets.co.uk](http://www.ryder-daviesvets.co.uk)

Book with your Local, Independent **Award-Winning** Holiday & Cruise

*specialists*



# TravelQuest

part of Fred. Olsen Travel



FIND ALL  
OUR SHOPS



**TravelQuest** part of Fred. Olsen Travel  
18 Church Street **Woodbridge** IP12 1DH  
☎ **01394 388838**



FOLLOW US  
ON Facebook



## GRUNDISBURGH VILLAGE SHOW ENTRY FORM 2023

To be handed in at the Parish Room, The Green, Grundisburgh, between 6.30 p.m. and 9.00 p.m. on Wednesday 12<sup>th</sup> July 2022, or posted to the Secretary, Apple Tree Cottage, Boot Street, Great Bealings, IP13 6PB to arrive by then. Please use one entry form per person. Complete in block capitals. First name, not initials, please. Circle all classes you want to enter.

Name: ..... Age (children only) .....

Address.....

Postcode ..... Phone..... Email .....

<b>Flower arranging</b>	1	2	3	4	5	6	7	8	9	10	11
<b>Flowers &amp; Plants</b>	12	13	14	15	16	17	18	19	20	21	22
	23	24	25	26	27						
<b>Vegetables &amp; Herbs</b>	28	29	30	31	32	33	34	35	36	37	38
	39	40	41	42	43	44	45	46	47	48	49
	50	51	52	53							
<b>Fruit</b>	54	55	56	57	58	59					
<b>Preserves</b>	60	61	62	63	64	65	66				
<b>Baking</b>	67	68	69	70	71	72	73	74	75	76	77
	78										
<b>Other produce</b>	79	80	81	82	83						
<b>Art</b>	84	85	86	87	88	89					
<b>Photography</b>	90	91	92	93	94	95					
<b>Handicraft</b>	96	97	98	99	100	101	102	103	104	105	106
<b>Over 65's</b>	107	108	109	110	111						
<b>Beginners</b>	112	113	114	115							
<b>Youth</b>	116	117	118	119	120						
<b>Children 8-11 years</b>	121	122	123	124	125						
<b>Children 5-7 years</b>	126	127	128	129	130						
<b>Children 4 and under</b>	131	132	133	134	135						

Entry fee 30p per class.      Number of classes entered: .....      Total fees: .....

Please tick the box if we may keep your data and contact you again in the future



# EVENTS FOR 2023

## HIDDEN GARDENS

Saturday 10<sup>th</sup> and Sunday 11<sup>th</sup> June.

A selection of gardens open between 2:00 p.m. and 6:00 p.m. Tickets giving access to all gardens on both days are £4.50/person in advance from village outlets or £5.00/person on the day from the stall on Grundisburgh Village Green. Teas, refreshments, plant and cake stalls. Supported by the Grundisburgh Dog and Katies Garden.

## VILLAGE SHOW

Saturday 15<sup>th</sup> July, 12:30 p.m. to 5:00 p.m. Playing Field, Ipswich Road, Grundisburgh, IP13 6TN

Stalls and car boot open 12:30 p.m. Marquee opens: 1.00 p.m. to patrons and people with disabilities, 1:30 p.m. to the public.

Free admission to field. Entry to marquee 50p.

Extra attractions include classic cars, live music, teas, bars, bbq, side shows and lots more.

**No dogs, apart from guide dogs are allowed on the Playing Fields.**

## SUMMER DANCE

Saturday 15<sup>th</sup> July, 7:45 p.m. to 11:45 p.m. in the marquee on the Playing Field. Tickets will include a supper, bring your own drink. Dancing to live music from The Lark Side. Tickets available from: Ben & Mandy Cook, 01473 735081 [bencandmandya@googlemail.com](mailto:bencandmandya@googlemail.com)

## AFTERNOON GARDEN PARTY

Friday 4<sup>th</sup> August, 6:30 p.m. - 8:30 p.m. at a garden in the centre of Grundisburgh. No dogs admitted. Tickets £10.00 (includes Ploughman's supper and a glass of wine / soft drink) must be bought in advance, from Williams Stores or The Olde Forge Stores, The Green, Grundisburgh.

More information about Grundisburgh Burgh & Culpho Horticultural Society on: [www.grundisburgh.show](http://www.grundisburgh.show)